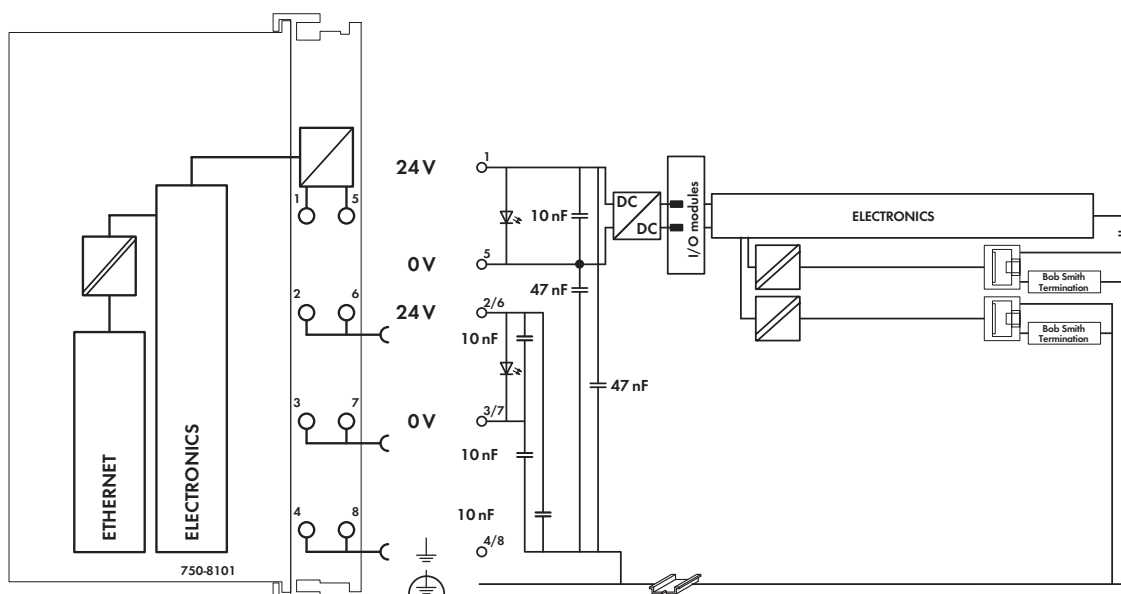


Technical Data

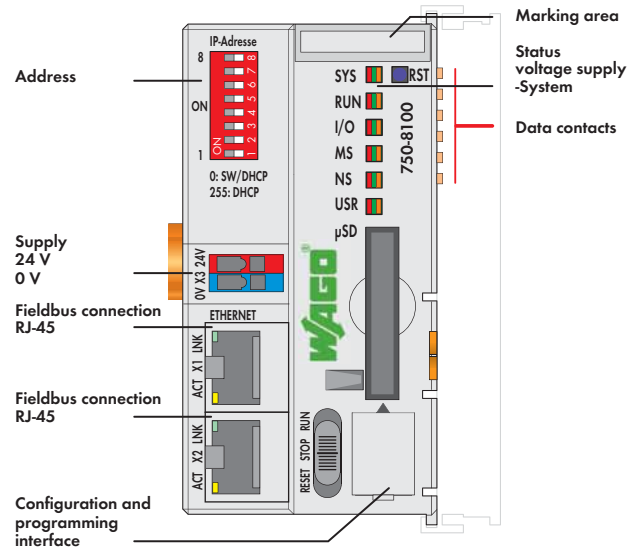
Number of I/O modules (per node)	64
with bus extension	250
Input and output process image (max.)	
Data width process image	Internal data bus: 1000 words; MODBUS: 1000 words
Diagnostic LEDs	Power supply; SYS; RUN; FIELDBUS (MS, NS); USER (U1); Internal data bus
Indicators	User LEDs: via CODESYS library
Memory configuration e!RUNTIME	
Program and data memory	12 MB (dynamically distributed)
Non-volatile memory (retain)	128 KB
Power supply	24 V DC (-25 % ... +30 %)
Max. input current (24 V)	550 mA
Total current for I/O modules (5 V)	1700 mA
Isolation	500 V system/supply

General Specifications

Dimensions (mm) W x H x L	62 x 65 x 100
	Height from upper-edge of DIN 35 rail
EMC immunity of interference	acc. to EN 61000-6-2, marine applications
EMC emission of interference	acc. to EN 61000-6-3, marine applications
Degree of protection	IP20 acc. to DIN 60529
Type of mounting	DIN 35 rail
Housing material	PC
Wire connection	CAGE CLAMP®
Cross sections	0.08 mm ² ... 2.5 mm ² / AWG 28 ... 14
Strip lengths	8 ... 9 mm / 0.33 in
Ambient conditions	
Operating temperature	0 °C ... +55 °C
Storage temperature	-25 °C ... +85 °C
Relative air humidity (no condensation)	95 %



Technical Data		General Specifications	
Number of I/O modules (per node)	64	Dimensions (mm) W x H x L	62 x 65 x 100
with bus extension	250		Height from upper-edge of DIN 35 rail
Input and output process image (max.)		EMC immunity of interference	acc. to EN 61000-6-2, marine applications
Data width process image	Internal data bus: 1000 words; MODBUS: 1000 words	EMC emission of interference	acc. to EN 61000-6-3, marine applications
Diagnostic LEDs	Power supply; SYS; RUN; FIELDBUS (MS, NS); USER (U1); Internal data bus	Degree of protection	IP20 acc. to DIN 60529
Indicators	User LEDs: via CODESYS library	Type of mounting	DIN 35 rail
Memory configuration e!RUNTIME		Housing material	PC
Program and data memory	12 MB (dynamically distributed)	Wire connection	CAGE CLAMP®
Non-volatile memory (retain)	64 KB	Cross sections	0.08 mm ² ... 2.5 mm ² / AWG 28 ... 14
Power supply	24 V DC (-25 % ... +30 %)	Strip lengths	8 ... 9 mm / 0.33 in
Max. input current (24 V)	550 mA	Ambient conditions	
Total current for I/O modules (5 V)	1700 mA	Operating temperature	0 °C ... +55 °C
Isolation	500 V system/supply	Storage temperature	-25 °C ... +85 °C
		Relative air humidity (no condensation)	95 %



The PFC100 Controller is a compact PLC for the modular WAGO-I/O-SYSTEM. In addition to providing commonly used network and fieldbus interfaces, the controller supports all digital, analog and specialty I/O modules in the 750/753 Series.

Two ETHERNET interfaces and an integrated switch enable line topology wiring – no extra-cost hardware is needed.

An integrated Webserver provides user configuration options and displays PFC100 status information.

Besides the processing industry and building automation, typical applications for the PFC100 include standard machinery and equipment control (e.g., packaging, bottling and manufacturing systems, as well as textile, metal and wood processing machines).

The DIP switch configures the last byte of the IP address and may be used for IP address assignment.

The controller's programming complies with IEC 61131-3.

- Programmable via e!COCKPIT
- Direct connection of WAGO I/O modules
- 2 x ETHERNET (configurable)
- Linux 3.18 operating system with RT-Preemption patch
- Configuration via e!COCKPIT or Web-Based Management user interface
- Maintenance-free

Description	Item No.	Pack. Unit
PFC100 CS 2ETH ECO	750-8100	1
Accessories		
microSD memory card, 2 GB	758-879/000-3102	1
Miniature WSB Quick marking system		
plain	248-501	50
with marking	see Full Line Catalog Automation Technology	
Approvals		
Conformity marking	CE	
Marine applications	pending	
UL 508	pending	
TÜV 14 ATEX 148929 X	pending	
IECEx TUN 14.0035 X	pending	

System Data	
CPU	Cortex A8, 600 MHz
Operating system	Real-time Linux 3.18 (with RT-Preemption patch)
Retain memory	64 Kbytes
ETHERNET	2 x RJ-45 (configurable)
Transmission medium	Twisted Pair S-UTP
	100 Ω, Cat 5;
	Max. line length: 100 m
Baud rate	10/100 Mbit/s; 10Base-T/100Base-TX
Protocols	DHCP, DNS, NTP, FTP, FTPS, SNMP, HTTP, HTTPS, SSH, MODBUS (TCP, UDP)
Programming	e!COCKPIT
IEC 61131-3	IL, LD, FBD (CFC), ST, FC
SD card slot	Push-push mechanism, sealable cover lid
Type of memory card	microSD up to 32 GB (All guaranteed properties are only valid when used with WAGO's 758-879/000-3102 memory card.)

